

## Dumbwaiter Specifications

### GENERAL

Standard Car Size . . . . .20" x 27" x 24"  
 Standard Hoistway Size (Finished) . . . . .29 1/2" x 29 1/2"  
 Travel . . . . .up to 35'  
 Maximum Landings . . . . .5  
 Speed . . . . .18 FPM  
 Capacity . . . . .200#

### DRIVE

Motor . . . . . Totally enclosed in-line gear motor  
 Supply Volts . . . . .115V, 1 PH, 60 HZ, .15 AMPS  
 Horsepower . . . . .1/6  
 Duty . . . . .20 starts per hour  
 Leads . . . . . Electrically released direct coupled disc  
 Drive . . . . . Winding Drum

### RAILS

Type . . . . . Formed galvanized steel  
 Size . . . . . 16 gauge

### CAR

Frame . . . . . Formed galvanized steel  
 Standard Cab . . . . . 5/8" melamine w/ removable shelf  
 (optional Stainless Steel cab available)

### CONTROL

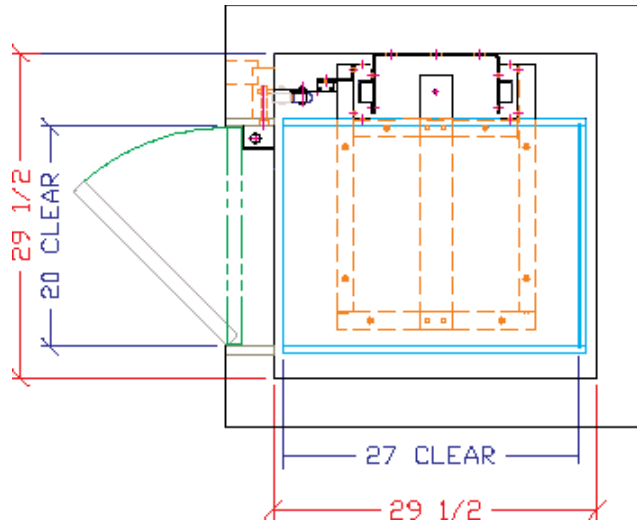
Type . . . . . Relay  
 Operation . . . . . Call / Send automatic push button  
 Limits . . . . . Snap action industrial  
 Door Locks . . . . . Electrical or mechanical release

These specifications represent our standard dumbwaiter configuration. Many of these specifications can be modified to suit special situations; please contact us to discuss your requirements.

Installation must be done in accordance with manufacturer's published installation and operation instructions as furnished with equipment, and in compliance with all applicable codes. Elevator Concepts LTD assumes no liability for equipment improperly installed.

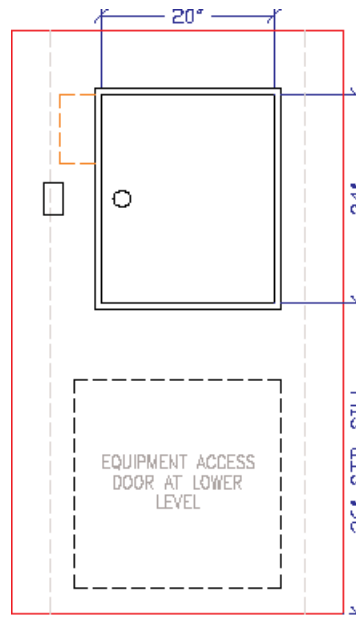
Elevator Concepts LTD continually improves its products. This specification is subject to change at the sole discretion of Elevator Concepts LTD.

## Standard Dumbwaiter Plan View



The diagram above represents our standard model only.

## Door Elevation



Note: Typical drawing for illustration only. Do not construct hoistway from this drawing. Consult the factory or your dealer.

**ELEVATOR CONCEPTS LTD**

Revised 4/02

# Residential Dumbwaiter

## RD-2 MODEL



**ELEVATOR CONCEPTS LTD**

18720 Krause  
 Riverview, MI 48192  
 734-246-4700 (phone)  
 734-246-2547 (fax)  
[www.elevatorconcepts.com](http://www.elevatorconcepts.com)

# Dumbwaiters

Since 1986 Elevator Concepts LTD has designed and manufactured high quality elevators designed specifically for the residential and access market.

In 1998, we expanded our product line to include residential dumbwaiters. Efficient, quiet and dependable, a residential dumbwaiter offers today's homeowner a cost-efficient alternative when space and budget constraints prohibit the installation of an elevator.

A dumbwaiter from Elevator Concepts is highly adaptable during a home remodeling project or easily incorporated into the construction of new multi-level residence.



***Affordable,  
Dependable,  
Versatile....***

Designed to carry maximum loads of 200 lbs, and travel up to 35 feet, the RD-2 offers convenience previously associated only with luxury homes.

Contact a Sales R



## ***Easy to Install***

Each RD-2 dumbwaiter comes complete with formed rails, fully finished melamine car with removable shelf, and easy to install drive mechanism. All necessary wiring material, fasteners, and easy-to-follow installation manual are included.

The motor, gearbox and brake are a single unit, factory mounted to a frame that installs at the base of the dumbwaiter. All control equipment is commercial grade and the steel car frame is designed to accommodate minor variations in hoistway size. Under normal residential use, maintenance is generally not required.

## ***Warranty***

Your investment with Elevator Concepts is protected with an one year limited warranty against defects in material or workmanship.

Contact a Sales Representative today at (734) 246-4700 for available design options, custom orders and current pricing or visit us on the web at [www.elevatorconcepts.com](http://www.elevatorconcepts.com).

## ***Ideal for transporting:***

- Groceries and Packages
- Firewood
- Food and Beverages
- Laundry
- Trash
- Cleaning Supplies

## ***Features***

- 200 lb pound capacity
- 18 FPM travel speed
- 1/6 hp winding drum drive
- Standard car size  
20" (w) x 27" (d) x 24" (h)
- Available up to 5 stops
- Up to 35' travel
- Designed to fit standard 16" o.c. framing

**Your Dealer Is:**

**Visit us on the web @ [www.elevatorconcepts.com](http://www.elevatorconcepts.com)**